

Global Gasification Trends 2012—2050



The Adoption of Piped Natural Gas Around the World: A Key Driver for Future Demand

Edition One, April 2013

Published by StatPlan Energy Research

SAMPLE EXTRACTS

Note: This report supports the excel database which accompanies it

StatPlan Energy's latest report, "*Global Gasification Trends 2012 - 2050*" forecasts a 15.7% increase in gas connections in Europe by 2030. This equates to 20.3 million additional connections in 17 years, to reach a total of 145.2 million households.

In that time, many gas sources which we refer to today as "non-conventional" will have become very much conventional. All analysts anticipate significant competition for LNG which is the current solution for many European countries, but we also see a significantly increased customer base.

Today electricity is produced and distributed in over 260 countries but piped gas is only available in around 90 countries. Gas is more widely available in cylinders or bottles of LPG. In most countries which have piped gas infrastructure, LPG is also distributed in cylinders or bottles to areas outside the average. This is widespread in many of the world's largest markets, notably, China (100 million households), India (60 million), Mexico (24 million), the USA (20 million), and Japan (26 million) (15 million).

Figure 1 : End use of natural gas for selected large consuming countries and regions

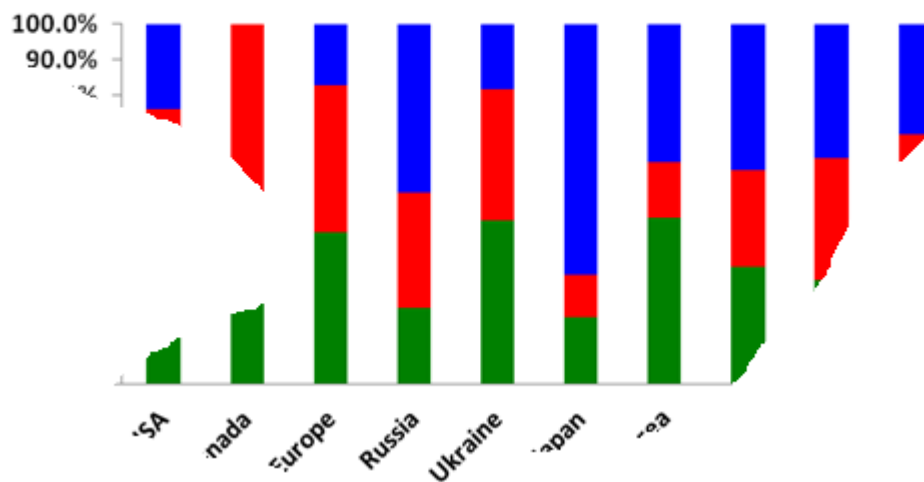


Figure 4: Population growth % in each decade by region

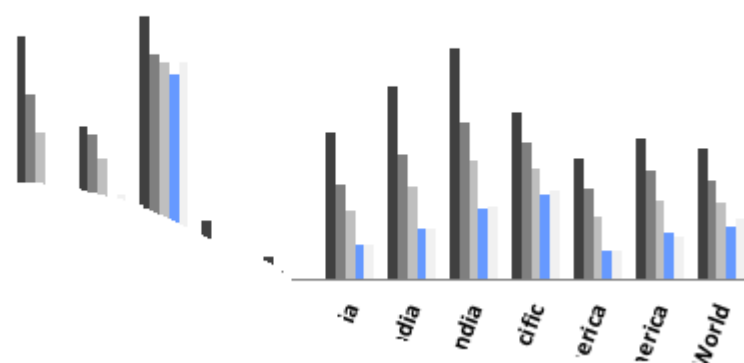


Table 1: Average household size by region, 1900, 2010 and 2050

	1900	2010	2050	2012/1900	2050/1900
America	4.8	2.6	2.1	55%	43%
	4.9	2.6	2.2		45%
	5.6	2.9	2.3		41%
	5.5	2.8	2.2		40%

Figure 9: Numbers of household gas consumers by region, 1900-2050

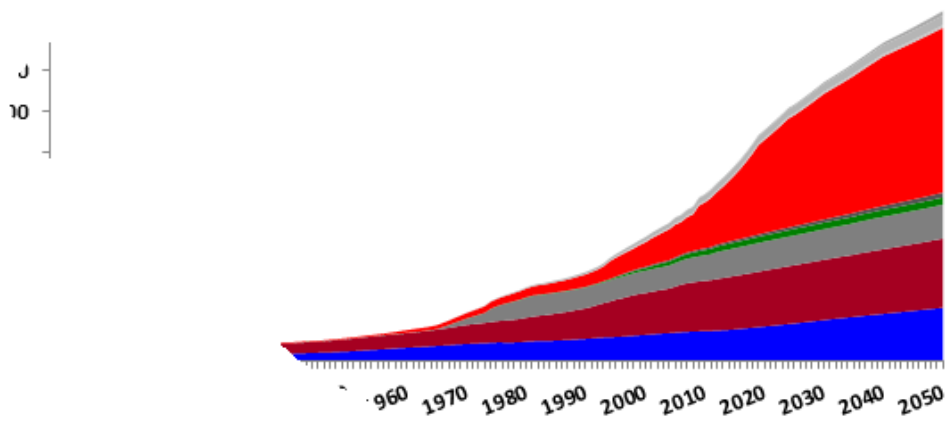
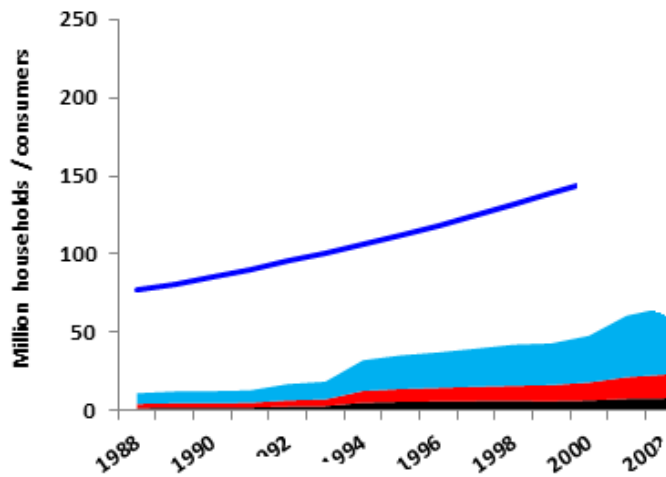


Table 3: Trends in Regional Shares of the Global Gas Market, 1900 - 2050

	1900	2013
North America	57.0%	16.8%
Europe	40.0%	28.5%
Asia	2.1%	1%
East	0.0%	
Africa	0.0%	
Australian	0.0%	
South America	0.9%	
Pacific	0.0%	
South America		
Central America		

Figure 12: Household penetration of manufactured gas, natural gas and LPG in China, 1988 to 2010.



Contact us through the website www.statplanenergy.com or direct to d.dower@statplanenergy.com for more information